

Migration of data from seca Analytics 115 into seca Analytics 125

You can import data from the seca analytics 115 software to the seca analytics 125 software. Only measurement data are imported, no analyses. New analyses are calculated from the imported measurement data in the seca analytics 125 software with current formulas.

NOTE

- ▶ A backup file from the seca patient database of the seca analytics 115 software is used as the source for data import (file format .bak). You can find information on creating the backup file in the instructions for use for seca analytics 115.
- ▶ Only backup files with the latest version of the seca 115 software can be used for import.
- ▶ Data import is possible only when your seca analytics 125 configuration is not integrated in a third-party system.

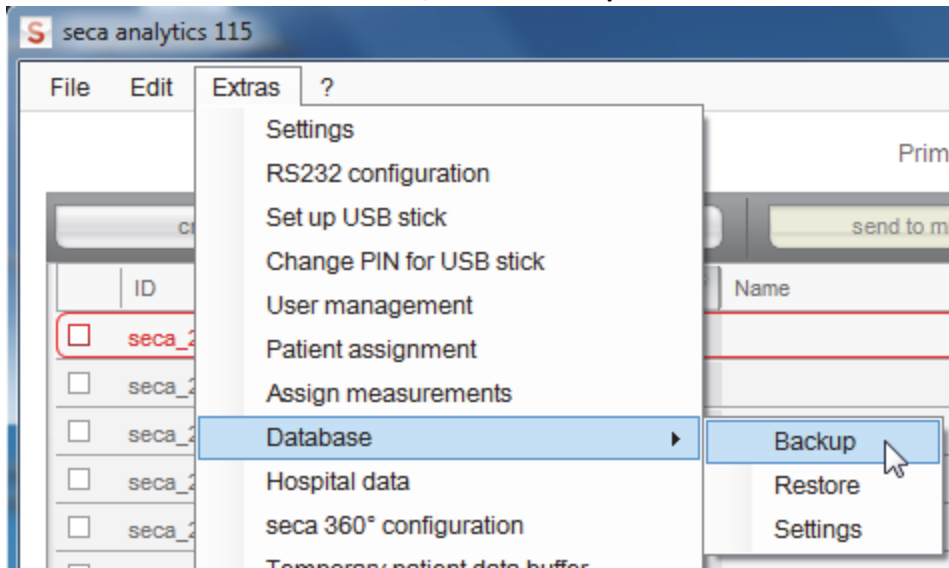
The following data are imported (data content possibly lower depending on the size of the source data):

Data type	Data content
Patient data	<ul style="list-style-type: none"> • Patient ID (IDP) • Last name • First name • Date of birth • Gender • Ethnicity • Email address
Measurement data	<ul style="list-style-type: none"> • Values of bioimpedance measurement • Height • Weight • Waist circumference • Time of measurement • Model number of the device used for measurement

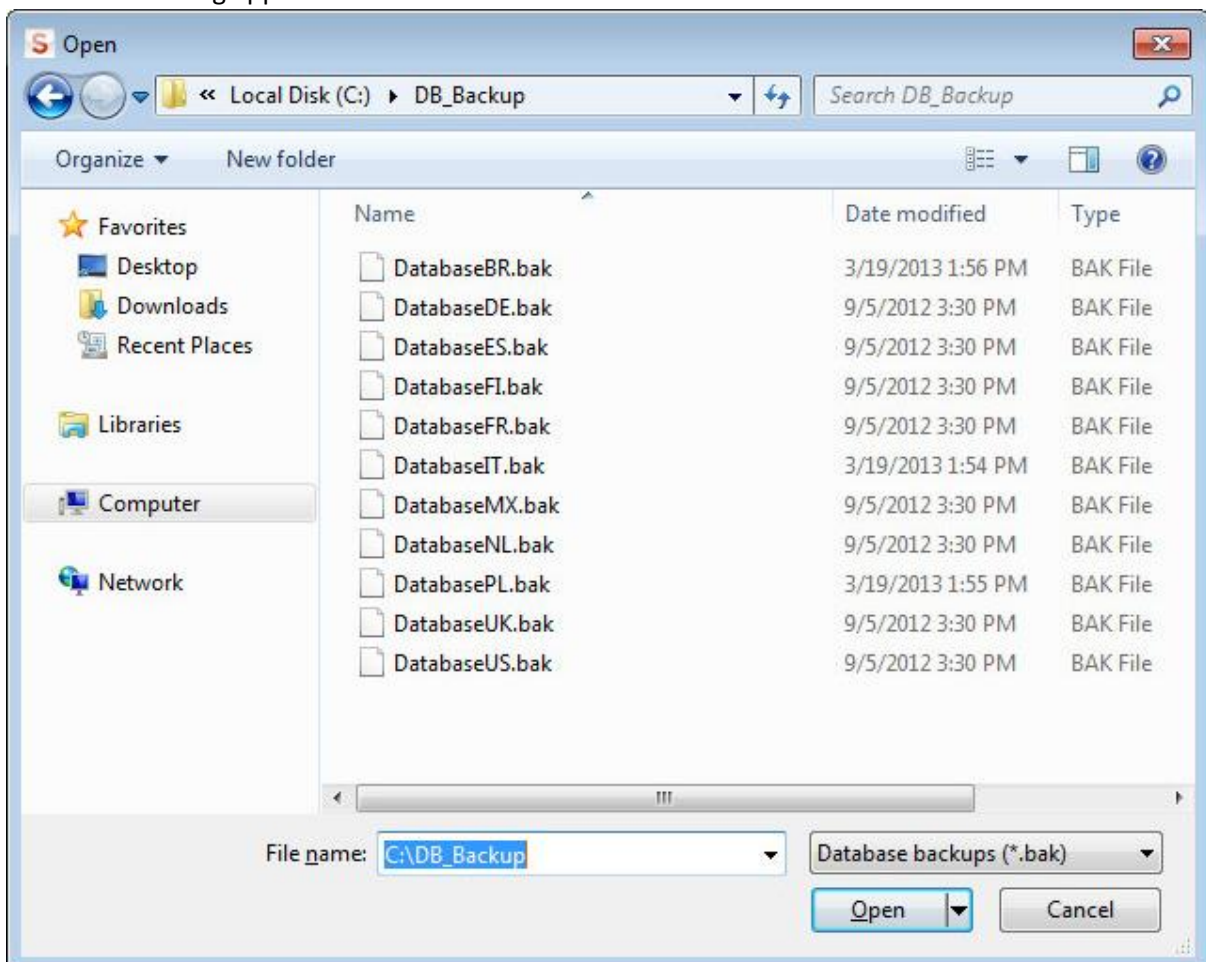
Creating a backup file in seca analytics 115

You can perform a manual backup of the seca patient database both on a server (recommended) and locally on a client PC.

1. In the **Extras** menu under **Server**, click on **Backup**.



The **Save as** dialog appears.




2. Select the save location.

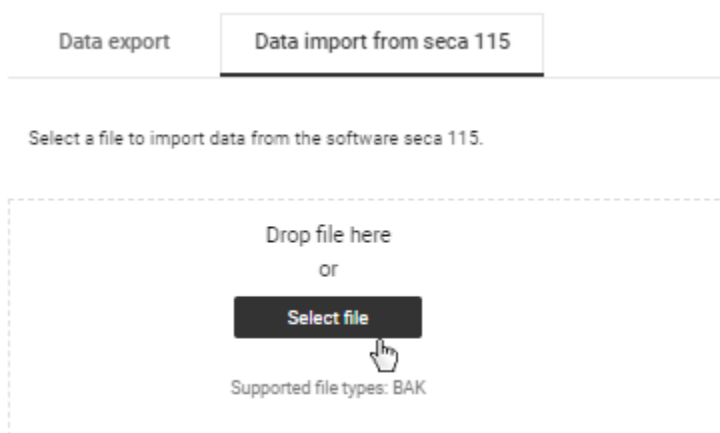
3. Click on **save**. The database backup is carried out.

Import of the backup-file into seca analytics 125

Proceed as follows to import data from the seca 115 software:


✓ Source data from the seca 115 software are available

1. Click .
2. Click **Data import/export**.
→ The **Data import/export** dialog is displayed.
3. Click the **Data import from seca 115** tab.
4. Select the desired import file (format: .bak) using one of the following methods:
 - a. ► Drag & drop the file into the marked area
 - b. ► Select the file via **Select file**



5. Click **Import**.

Select a file to import data from the software seca 115.

 seca115_backup.bak



- The status of the import process is displayed.
- If the import is successful, a success message is displayed.
- If the import is successful, the import process is shown in the **Recent imports** table below.