

# seca mBCA 555/seca TR U

## W-LAN-configuration

from Firmware Version 1.7.0








Configure your  
Wi-Fi connection  
in just a few  
steps





# seca mBCA 555/seca TRU

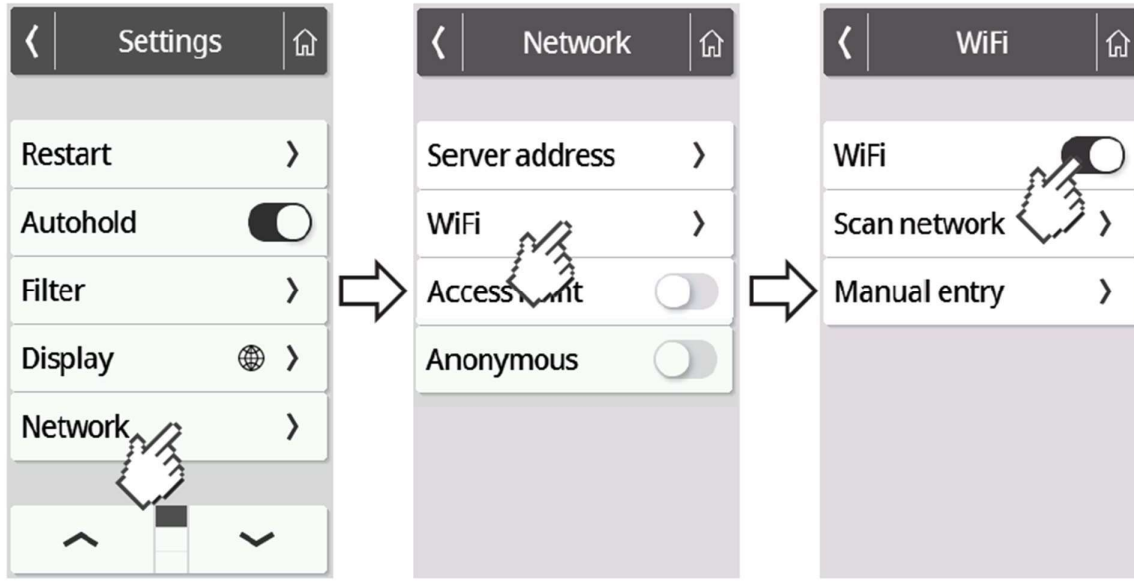
## Configuring the Wi-Fi connection

1. Make sure that there is no LAN cable connected to the device.
2. Make sure that TCP port 22020 is enabled for incoming and outgoing connections within your firewall.
3. Make sure that your seca mBCA 555 / seca TRU is powered by the supplied power supply.
4. Press the  button on the device display to access the device settings.
5. Use the  or  buttons to get to the "About" menu and call it up.
6. Use the  or keys  to access the "System Version" submenu.
7. The version number is displayed in green letters. This guide describes the WLAN configuration from firmware version 1.7.0 onwards. If firmware version 1.6.0 or lower is displayed, follow the instructions "WLAN connection" instead. If the firmware version number is not displayed in green letters, please contact seca Service.

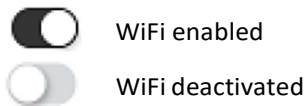


8. Use the  or buttons  to get to the "Network" menu and call it up.
9. Go to the "WiFi" menu.

# seca mBCA 555/seca TRU

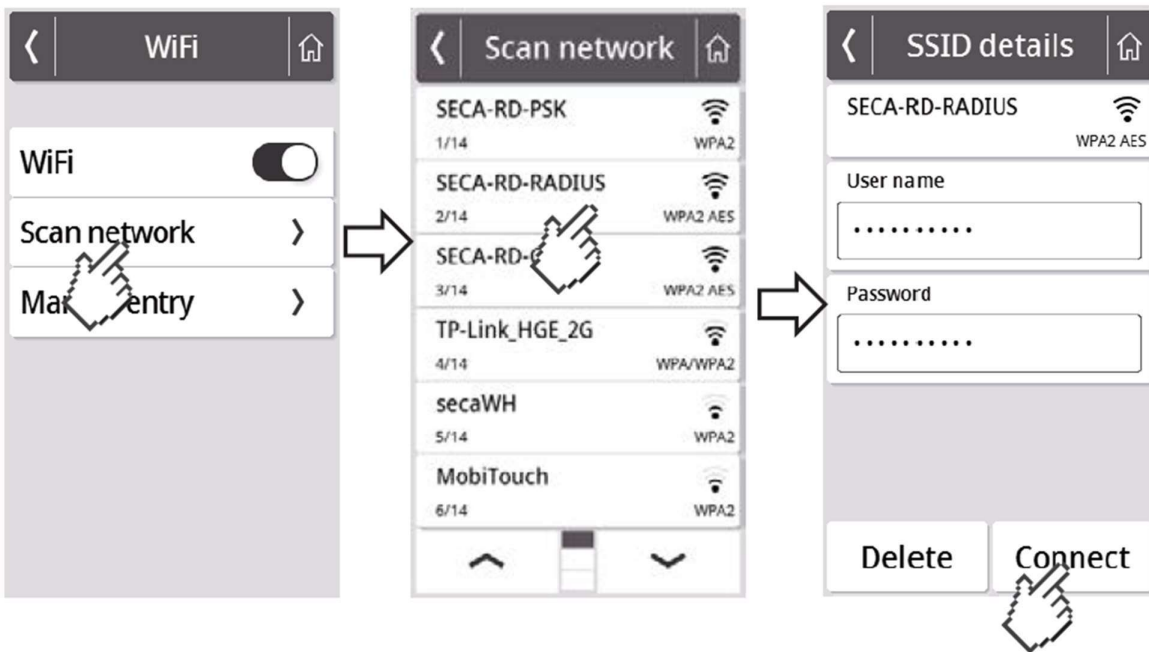


10. Activate the WiFi function.



11. Press the "Scan" menu.

The device will now search for available WiFi networks. This may take a moment.



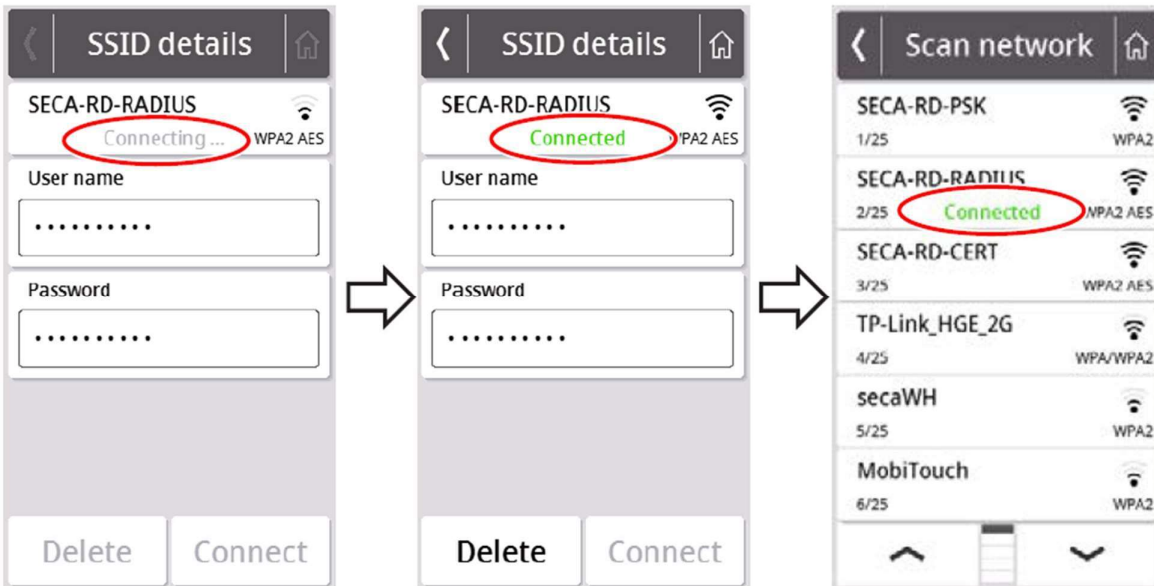
12. Select the network to which you want to connect the seca mBCA 555 / seca TRU. (Example here:

SECA-RD-RADIUS with WPA2 AES encryption standard)

**Attention: Only 2.4 GHz WiFi networks are supported.**

# seca mBCA 555/seca TRU

13. Enter the username (if required) and password for the selected WiFi network. To do this, press into the respective text field. After successfully entering, press the "Connect" button.




The seca mBCA 555 / seca TRU now establishes a connection to the selected WiFi network. As soon as the connection is established, it will be indicated by the message "Connected" behind the selected network.

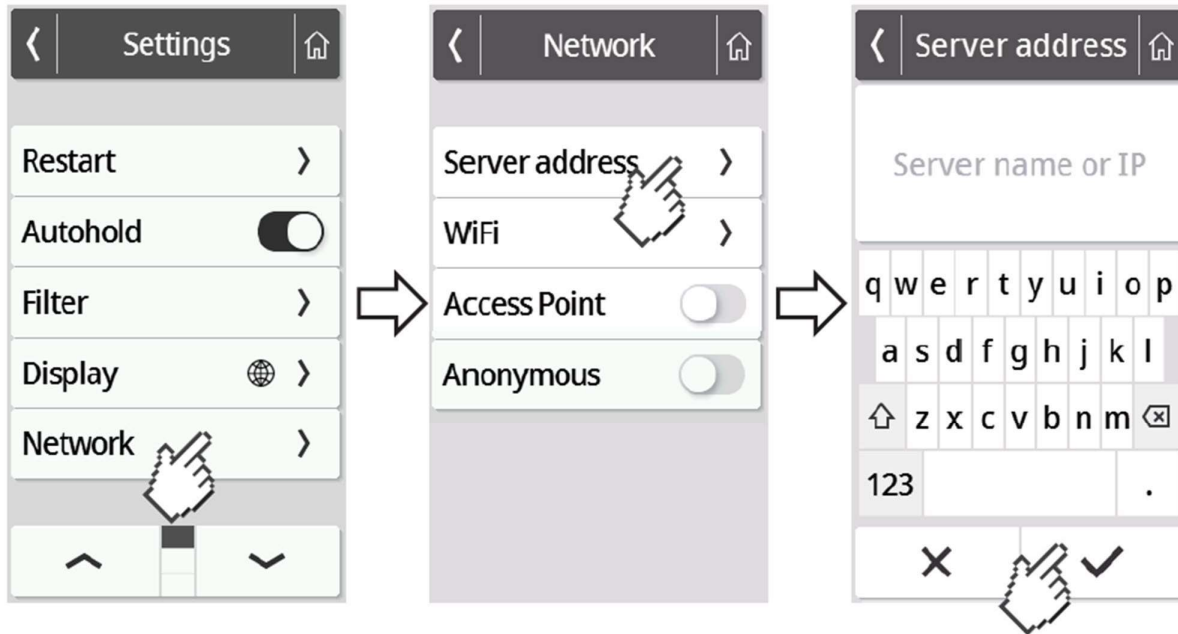
14. Press the  button to exit the menu.



The signal strength of the connected WiFi network is now displayed at the top of the display.

15. Go to the "Network" menu again (see steps 4 and 5). Then select "Server Address".
16. Enter the server name **gpx.secacloud.com** of the seca cloud server. Confirm your entry with the  button.

# seca mBCA 555/seca TRU



17. Follow the "Tenant Connection" guide to connect your seca mBCA 555 / seca TRU to your seca analytics 125 account.

Note: If you use your seca mBCA 555 / seca TRU in mobile use, follow the instructions "Mobile use".